



CITY OF CITRUS HEIGHTS

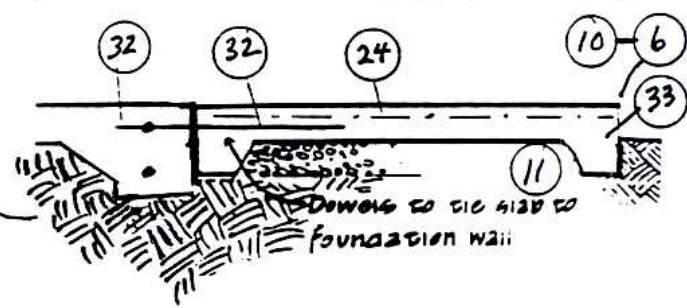
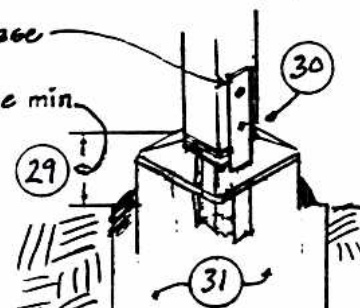
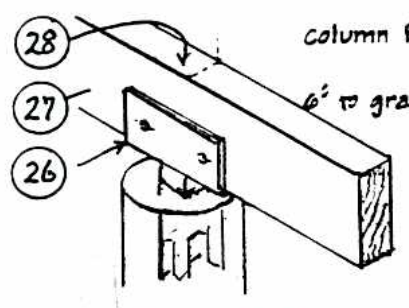
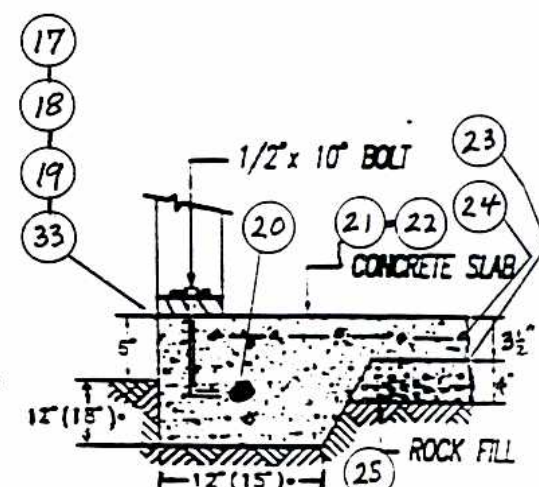
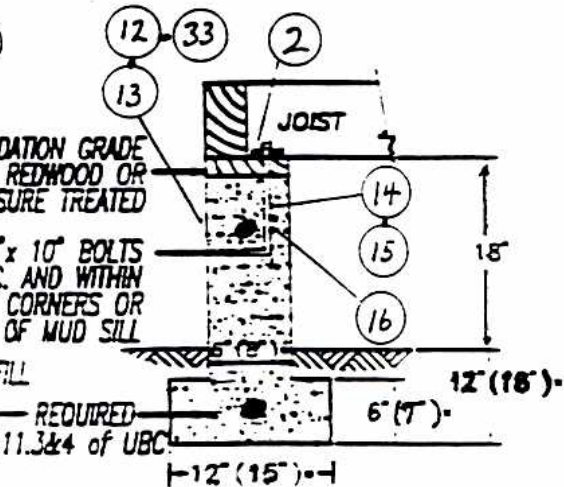
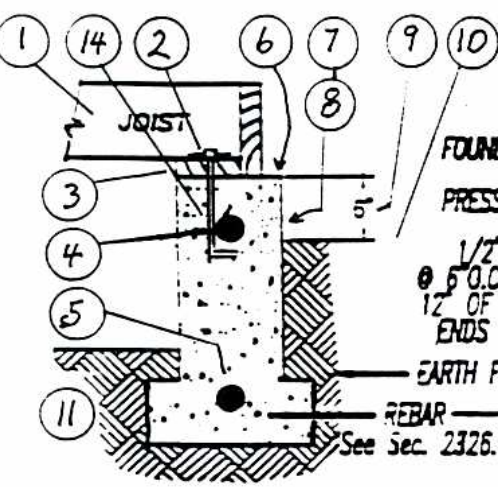
BUILDING DEPARTMENT

Technical Bulletin

6237 Fountain Square Drive * Citrus Heights, Ca. 95621-5577

(916) 727-4760 * Inspections (916) 727-4750 * www.ci.citrus-heights.ca.us

The City of Citrus Heights is committed to providing high quality, economical responsive services to our community.



~~1997 CBC~~ 2001 CBC

- | | |
|--|----------------|
| 1) Joist clearance 18", Girder 12" from soil | 2306.3 |
| 2) 2x2x3/16" Sq sill plate washer | 1806.6 |
| 3) P.T. sill or reawood sill rated | 2320.6 |
| 4) #4 rebar, 40 x bar dia. = 20" lap in trench | 1907.6.6.4 |
| 5) I-II story, req. 2 each #4 rebar, top/bottom 3" clr. | 1806.7.1 |
| 6) Elevate FND-12" plus 2% per ft- of gutter/curb/street | 1806.5.5 |
| 7) FND-stem-retaining walls over 4' or sur charge/haz chemicals require an engineer design | 106.2.5 |
| 8) Remove 100% of all forms before final occupancy request | 3302 |
| 9) 6" clearance of wood to soil | 1806.1-2306.8 |
| 10) Finish grade before final approval-2% (1/4per ft.)@ 5 ft. | 3315.4-108.5.6 |
| 11) Stumps and their roots removed to 12" below grade | 3302 |
| 12) FND-1 story= aepth 6", width 12", wall 6", below grade 12" | TBL18 I C |
| 13) FND-2 story=aepth 7", width 15", wall 8", below grade 18" | TBL18 I C |
| 14) Anchor bolt mono pour only, 1/2" x 10", 7" min embedment | 1806.6 |
| 15) 3 x sill plate requires 12" AB, 1". pour 7" embedment | 1806.6 |
| 16) Anchor bolt layout- 72" oc, 12' of splice, 3-1/2" min of end | 1806.6 |
| 17) 2-pour slab(non-mono). without 3x sill, requires 1/2"x14" AB | 1806.6 |
| 18) 2-pour slab with 3x sill. requires 1/2"x 16" anchor bolt | 1806.6 |
| 19) I & II story slab FND. #4 rebar top/bottom. 3" from earth | 1806.7.2 |
| 20) I story mono pour FND #5 rebar centered | 1806.7.2 |
| 21) Min. slab dept. 3-1/2" | 1900.4.4 |
| 22) *Note*: all 2 pour slabs have a cold joint. ICBO req. a min embedment of all Anchor Bolts of 7" min. | 1806.6 |
| 23) 6 mil plastic barrier with 1" sand | 2306.8 |
| 24) Reinforcement slab, 6x6x10 gu. wire mesh(exclude garage) | 1903.5.2 |

- | | |
|---|------------------|
| 25) 4" @ 3" rock base > 200sq. ft.,(excpn garage) | 1629,1630,2306.9 |
| 26) Post to girder req mechanical attachment | Standard |
| 27) Girders 4x6 min, structural grade DF. 1 story only | 2320.7 |
| 28) Girders bearing- 1-1/2" wood, 3" concrete 1/2" air gap | 2320.8.2 |
| 29) DF post on slab elevate on pier 6" or 1" air gap base | 2306.5 |
| 30) Anchor base at piers or equal attachment | Standard |
| 31) Pier-1 story only= 14x14x12" deep, 8" above earth | 2306.5 |
| 32) Epoxy dowel a #4 rebar 12" into existing slab, 24" exposed in new slab, 24" oc. | 1605,1809 |
| 33) Fc/PSI concrete strength = 2500, 5 sack min | 1922.2.4 |

- Note:
- (A) All FND-Slabs-Piers Fc 2500 min, with reinforcement Seismic 3.
 - (B) Pier footings that are 2 story require Engineer design.
 - (C) Item #20, mono pour slab @ Alt Brace wall Requires 2 #4 rebar.
 - (D) Concrete slump 5" min. Spalling not accepted at inspection.
 - (E) Concrete slab glass fiber reinforcement. (See Building Official)
 - (F) Slab over 10', isolation joint middle 1/3. 1906.4.4-1922.3.1
 - (G) Never pour concrete until all under slab utilities are approved.108.5.
 - (H) Step FND where grade slopes more than 1 ft in 10 ft. 1806.4
 - (I) Investigate FND layout if slope is greater 3 to 1 ratio.
 - (J) Special grading and Engineer required of grades > 3 to 1.
 - (K) Place all concrete free of water, ice, mud on rebar, etc..
 - (L) Deposit all concrete in one phase. no delays, no oil on forms.
 - (M) Verify at FND inspection all property lines or markings.
 - (N) Verify on submitted plans lot drainage and direction/elevations.