



Background Analysis Scoring Map

NOTES ON HOW TO USE THE BACKGROUND ANALYSIS SCORING MAP:

The Citrus Heights Creek Corridor Trail Project is a project intended to determine the feasibility of constructing multi-use trails within the City's Creek Corridors and SMUD utility corridor.

The Citrus Heights Creek Corridor Trail Project is currently examining over 80 discreet segments that comprise Cripple, Arcade, and Brooktree Creeks and the SMUD utility corridor that connects Citrus Heights and Orangevale. The map line work represents the approximate center

Each of these segments has its own characteristics that will affect the feasibility of trail construction. Each segment was scored based on ownership, natural resources, corridor width, and topography.

By examining ownership, natural resources, corridor width, and topography for each segment we are developing an understanding about which segments have the best potential for accommodating a trail. This is primarily a relative analysis of where it may be physically possible to build trails.

This evaluation does not include consideration yet of whether or not adjacent property owners are in favor of or opposed to a trail. It also does not include evaluation of the connectivity value of a given segment. These considerations will be factored in later in the process as we start to establish priorities for implementation. We will also be examining the options for how segments intersect with the existing road network as another factor in assessing ease of construction.

The following map shows all of the individual segments. Each one has been given a relative rating that indicates its priority for further study as follows:

High: Trail construction in this segment appears to technically feasible with relatively few issues (12 miles in 41 segments).

Moderate: Trail construction in this segment appears to technically feasible but with a few challenges (6 miles in 16 segments).

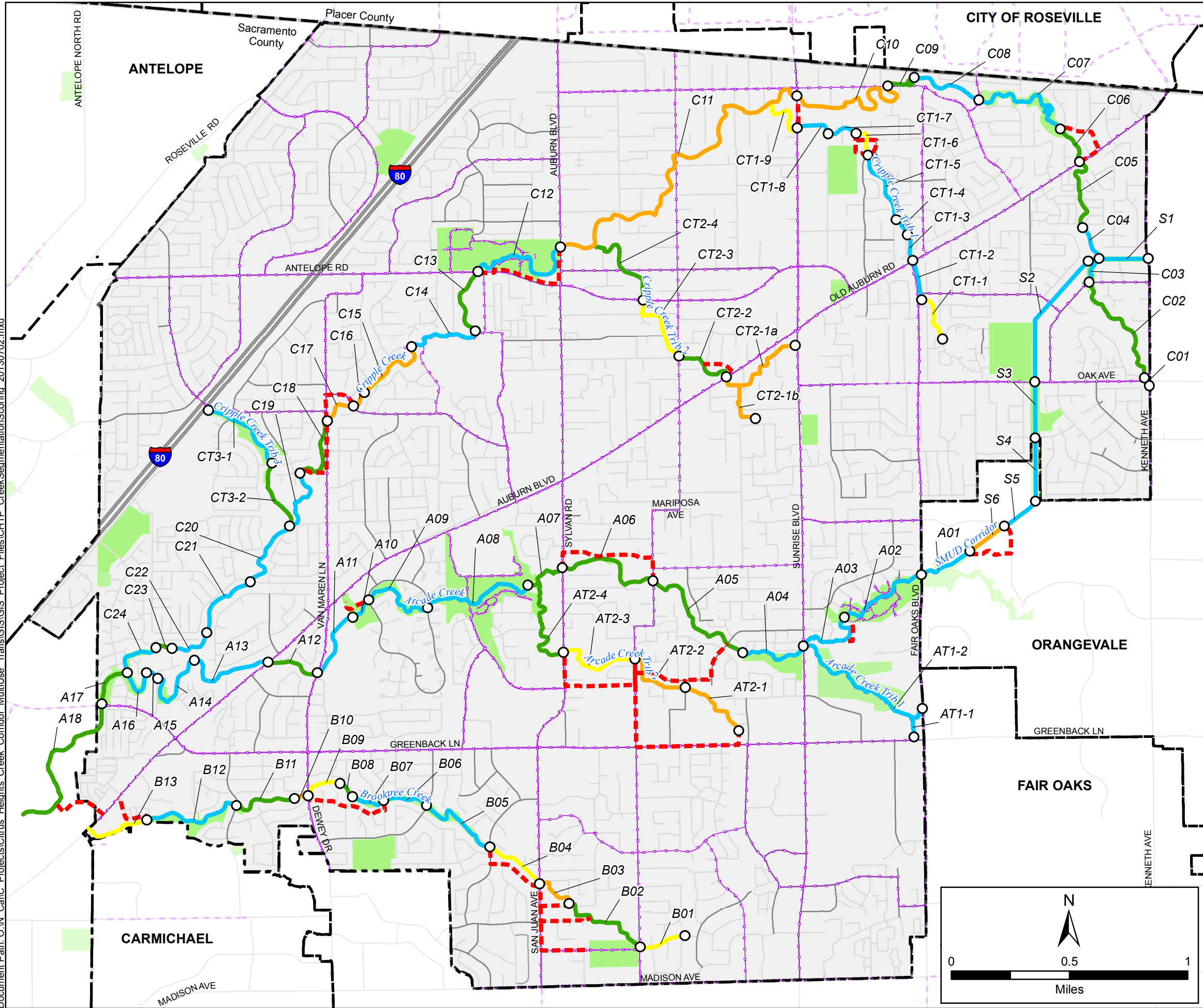
Low: Trail construction in this segment appears to technically feasible but there are some significant challenges (5 miles in 16 segments).

No Further Study: This segment has such limited potential to accommodate a trail that it does not merit further analysis (2 miles in 10 segments).

As you review this map, please keep in mind that it does not represent any final decision about where trails will eventually be built. It is a tool that we are using to help focus additional analysis and examination.

Your thoughts and comments about how various segments are classified are welcome. Please email ckempenaar@citrusheights.net with any comments or questions. Please make sure you provide your e-mail contact information so we can continue to notify you when new information is available for review.

Document Path: O:\N Cal\C Projects\Citrus Heights Creek Corridor MultiUse Trails\GIS\GIS Project Files\CHTP_CreekSegmentationScoring_20130702.mxd



Background Analysis Scoring

LEGEND

Scoring Segmentation

○ Begin/End Point

Priority for Further Study

High

Moderate

Low

No Further Study

Other Routes

Alternate Route

Bike Lane/Trail (Existing and Proposed)

Neighboring Community Bike Routes

Jurisdictions

City of Citrus Heights

Other Communities

County Boundary

SRPD/ORPD Parks

NOTE ON MAP USE:
Preliminary scoring results are only intended to focus further study efforts and in no way represent the final assessment of trail feasibility for any particular creek corridor.

FOOTHILL ASSOCIATES
ENVIRONMENTAL CONSULTING • PLANNING • LANDSCAPE ARCHITECTURE

PSOMAS

© 2013

Drawn By: MUB

Date: 07/11/2013

Document Name: CHTP_CreekSegmentationScoring_20130702